

## Gigabit Ethernet

AGGREGATION SERVICES

### HIGHLIGHTS

**Mix It Up**—Combine access technologies (Ethernet, DSL, DS1, and DS3) over the same Gigabit Ethernet connection

**Decrease Your Costs**—Consolidate aggregation ports and circuits to reduce operational complexity and lower your monthly fees

**Increase Your Bandwidth**—Fast, responsive, industry-standard Gigabit Ethernet services up to 1.0 Gbps per port

**Scale with Ease**—Purchase only the bandwidth you need in 100-Mbps increments; upgrade or downgrade as needed

**Manage Your Capacity**—You decide whether to add capacity or oversubscribe

**Ensure High Availability**—Choose from two redundancy options with automated failover capability

**National and Zonal Coverage**—Get the comprehensive coverage you need

## Grow Efficiently with MegaPath Gigabit Ethernet Aggregation Services

Increasing bandwidth demands are forcing many service providers to upgrade their network in order to handle the incremental traffic load. Traditionally, aggregation ports and circuits such as OC3 and DS3 have been used to connect to carrier networks. As you grow, MegaPath Gigabit Ethernet aggregation services offer a higher-bandwidth, scalable alternative to OC3s and DS3s that can improve your operational efficiency and reduce costs.

**EXPAND AND SAVE.** MegaPath Gigabit Ethernet, with capacity up to 1.0 Gbps, provides Ethernet-based connectivity between the MegaPath network and your network. MegaPath Layer 2 partners can expand their network capacity and save on operational costs.

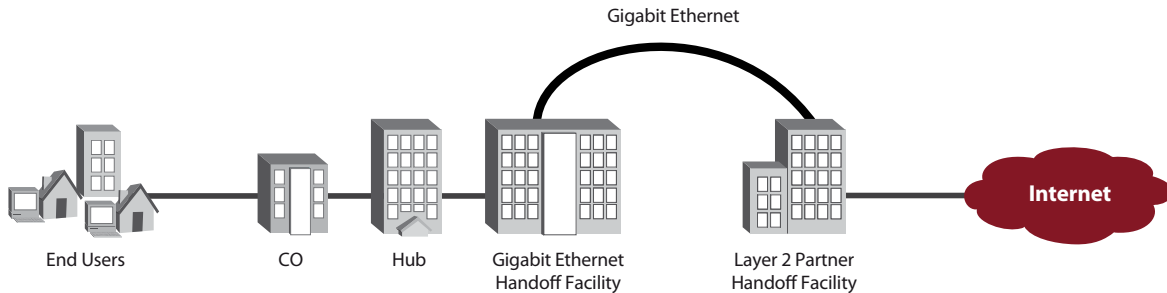
**SCALABLE PERFORMANCE.** MegaPath Gigabit Ethernet service scales from 100 Mbps to 1.0 Gbps, so you can increase bandwidth as needed in 100-Mbps increments. It can be reconfigured within two business days, so you can respond quickly to your changing requirements. You can also add redundancy to your configuration, if needed.

**THE MEGAPATH ADVANTAGE.** MegaPath offers a number of advantages you don't get with other carriers. For example, each zonal Gigabit Ethernet port gives you access to the regions covered within that MegaPath Gigabit Ethernet zone. National coverage is available with remote fees. MegaPath also allows you to mix access technologies (Ethernet, DSL, DS1, and DS3) over the same aggregation port for efficiency and cost savings. And we let you decide whether or not to oversubscribe your network. The choice is yours.

# Gigabit Ethernet

AGGREGATION SERVICES

## GROW WITH GIGABIT ETHERNET AGGREGATION SERVICES



<b>TECHNOLOGY</b>	Gigabit Ethernet.
<b>SPEED</b>	Scales from 100 to 1,000 Mbps per port in 100-Mbps increments.
<b>PARTNER HANDOFF</b>	Single or double tagged VLAN options.
<b>FOOTPRINT/AVAILABILITY</b>	<ul style="list-style-type: none"> <li>• Handoff locations nationwide.</li> <li>• Request new handoff locations through your sales executive.</li> </ul>
<b>CONNECTION OPTIONS</b>	Gigabit Ethernet aggregation port with MegaPath-provided or partner-procured circuit; MegaPath-provided circuit only offered at 1.0 Gbps.
<b>FLEXIBLE FEES</b>	Professional installation by a MegaPath technician.
<b>REDUNDANCY OPTIONS</b>	<ul style="list-style-type: none"> <li>• Single port—No redundancy.</li> <li>• LAG—Link aggregation for load sharing of bandwidth and automatic failover.</li> <li>• At 500 Mbps and higher we strongly recommend redundancy.</li> </ul>
<b>ATM TO GIGABIT ETHERNET INTERWORKING PROTOCOLS</b>	<ul style="list-style-type: none"> <li>• PPPoE to Gigabit Ethernet S-VID/C-VID tagged.</li> <li>• IPoA to Gigabit Ethernet S-VID/C-VID tagged.</li> <li>• IPoE to Gigabit Ethernet S-VID/C-VID tagged.</li> </ul>
<b>ENCAPSULATION OPTIONS</b>	<ul style="list-style-type: none"> <li>• PPPoEoA (point-to-point protocol over Ethernet over ATM).</li> <li>• RFC1483/2684 routed.</li> <li>• RFC1483/2684 bridged.</li> </ul>
<b>SUPPORT</b>	Dedicated, advanced technical support team, structured for end-to-end problem resolution, available 24 x 7 x 365, even on weekends and holidays.

**COUNT ON MEGAPATH.** From our nationwide coverage to our best-of-breed broadband services, we give you the rock-solid foundation you need to succeed. Our easy-to-use order management and trouble ticket systems simplify your business, and you can count on our support 24 x 7 year round. With over 12 years' experience, MegaPath has you covered.

Contact your MegaPath account executive, email [wholesale@megapath.com](mailto:wholesale@megapath.com) or call us at 408-856-6712.



W H O L E S A L E

2220 O'Toole Avenue San Jose, CA 95131-1326

© 2011 MegaPath. All rights reserved. MegaPath and the MegaPath logo are registered trademarks of MegaPath. Service is not available in all areas and is provided subject to MegaPath's standard terms, conditions and policies.